

**Temperature range : from 2°C to 10°C**



## Feature

### Precise Temperature Control System

Microprocessor PID controller ensures the most accurate temperature control and maintains cooled temperature during defrost cycle by unique designated technology

### PC Software System

RS-232C / 485 interface to LIS / HIS requirement with monitoring software is supplied

### Self-Diagnostic and Alarm System

- High / Low working room temperature Alarm
- Electric power failure Alarm
- Status of door opening warning Alarm
- Low battery for controller warning Alarm
- Operating temperature check in high and low
- Password locking system for set temperature

### Non-CFC/HCFC Refrigeration System

CFC/HCFC-free Hermetically sealed compressor and Natural Refrigerant gas are used for compliance with the New Environmental Regulation

### IQ-OQ Documentation & Validation

is provided on request as optional order

### High-density Polyurethane foam Insulation

With 60mm thickness Insulation provides excellent low temperature and maintains cool temperature for a long time in case of power failure

### Vacuum sealed Pair Glass Door

With embedded invisible heating film prevents viewing window from moisture condensation

### Automatic Defrost and Dehumidify System

Unique air flow circulation and defrost system provides high precision temperature uniformity and stability

### User Friendly Design

- Built-in Fluorescent lamp with ON/OFF switch and circulation fan stops while door is opening
- Door key Lock device and password lock for safety
- Height adjustable epoxy powder coated shelf

### Magnetic packing with adjustable tension Door

Magnetic packing with adjustable enforced tension door prevent cold temperature from any air leakage

### Pt-100Ω RTD Sensor

Provides the exact temperature control for products in the chamber (Option : Sensor in liquid bottle)



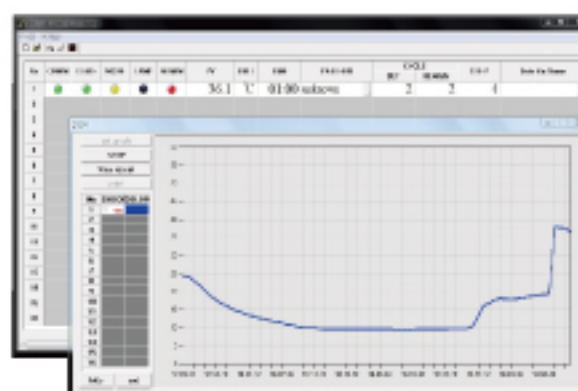
# Pharmaceutical Refrigerator

## Control System



- Compliance with International Medical standard and KFDA
- Audible / Visible Alarm System

## PC Software System



RS - 232/485 Interface  
Graphic monitoring for  
temperature on real-time

## Alarm System

- High / Low temperature alarm
- Electric power failure alarm
- Status of door opening warning alarm
- Low battery level warning alarm
- High and low temperature check alarm
- Password for set parameters protection
- Self-Diagnostic and alert system

## Equipped as Standard

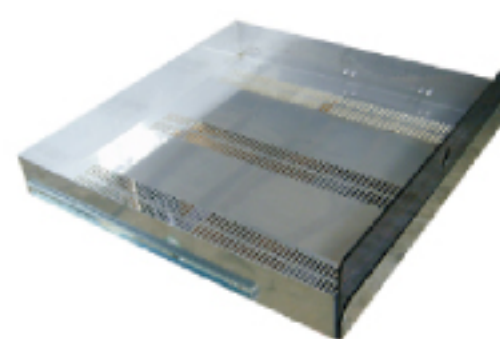


Battery Back up System

## Optional Accessories



7-days Chart Recorder



STS Drawer Shelf



Digital Recorder

MODEL		LCV-202GR	LCV-203GR	LCV-204GR
Dimensions (W x D x H mm)	Inner	560 x 660 x 800	620 x 700 x 1410	1140 x 700 x 1410
	Outer	683 x 775 x 1490	740 x 805 x 1985	1260 x 805 x 1998
Capacity		295 ℓ	612 ℓ	1125 ℓ
Refrigerator	Non-CFC	1 / 4 HP	1 / 4 HP	1 / 2 HP
Defrost Heater		300 W	300 W	300 W
		Stable temperature during defrost cycle		
Epoxy Powder Coated Wire Shelf		3 EA	6 EA	12 EA
Controller		Microprocessor Digital PID Controller with Battery back up system		
Display		4 Digit LED Display & LED signal lamps		
Temperature		2°C to 10°C		
		Set accuracy $\pm 0.1^{\circ}\text{C}$ / Uniformity $\pm 1^{\circ}\text{C}$ at $4^{\circ}\text{C}$		
Temperature Alarm		Set High limit & Low limit temperature, Audible and Visible Alarm		
Material	Interior	Stainless Steel 304		
	Exterior	Epoxy powder coated EGI steel		
Door		Vacuum Sealed Pair Glass Swing Door : Invisible heat film embedded, Key locker, Adjustable tension spring, Magnetic packing door		
Air Circulation		Turbo Fan with automatic stop / run during door open		
Safety		High / Low Temp. Protector, ELCB, Thermal Protector		
Electric Supply		110V 60Hz or 220/230V 50/60Hz		



Custom made order is available  
Specifications can be changed without prior notice for quality improvement.